



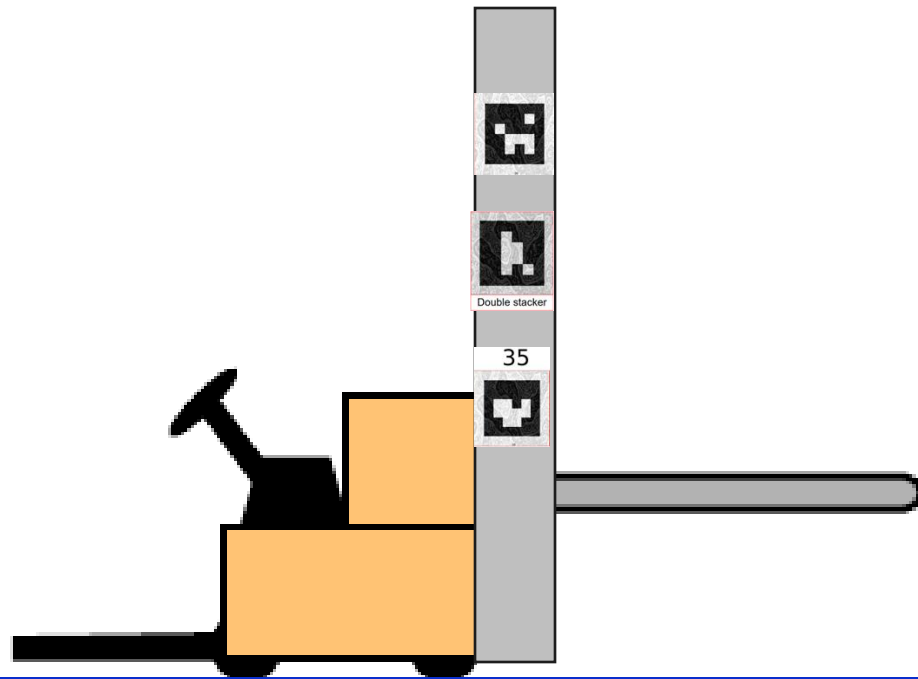
CIND Dimensioner
Registration of pallet mover (AGV, Forklift etc)

Prerequisite

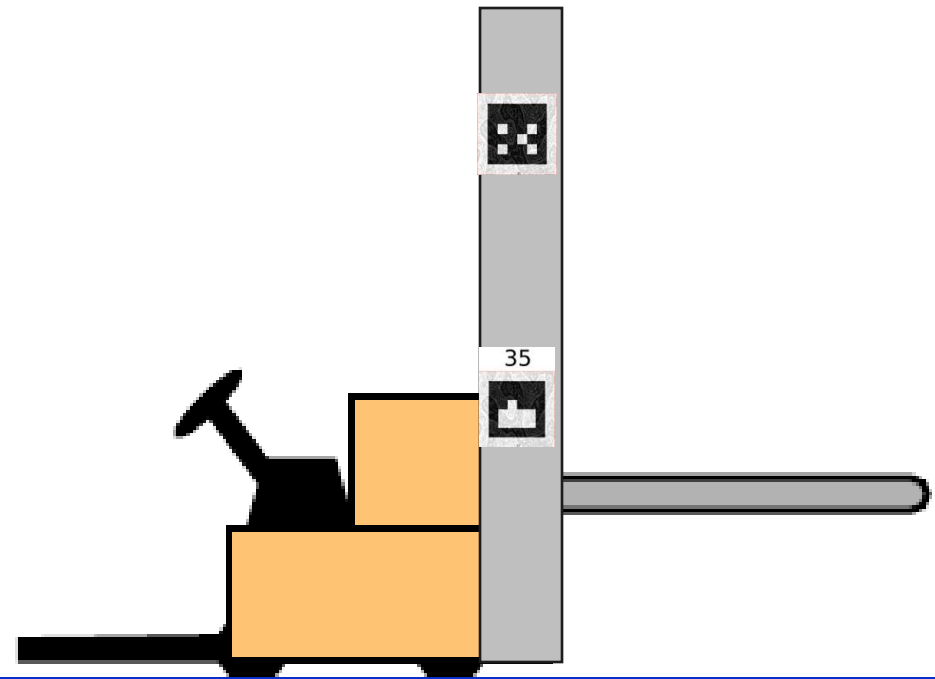
- Ensure that the forklift has Cind “Aruco Labels” labels mounted.
- Take the registration board and place it on forks. It is important that registration is placed flat on the forklift.
 - Arrow shall be pointed in same direction as the forks.
 - The registration board must be centered on the forklift forks. Note: Use a measuring tape to ensure it is properly centered.
- Drive the forklift through the gantry with the forks pointed in the direction.
 - Start point: 5 meters from gantry
 - Stable speed.
 - Stable registration plate.
 - Straight through the gantry.
 - End point: 3 meters after the gantry
 - If the registration was successful, the screen will indicate with a “green check and pallet calibration” symbol.

CIND Aruco Code – Pallet mover identificaion

LEFT SIDE OF PALLET MOVER

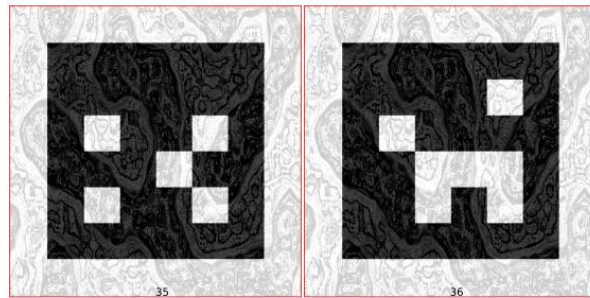


RIGHT SIDE OF PALLET MOVER



CIND Aruco Code – Pallet mover identificaion

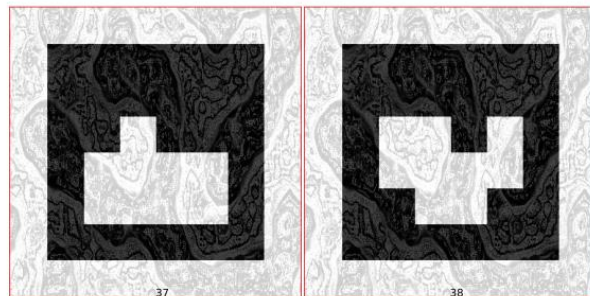
Pallet Mover Identification



35



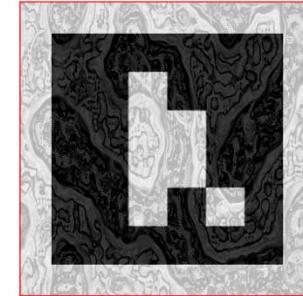
35



Pallet Mover Type Identification

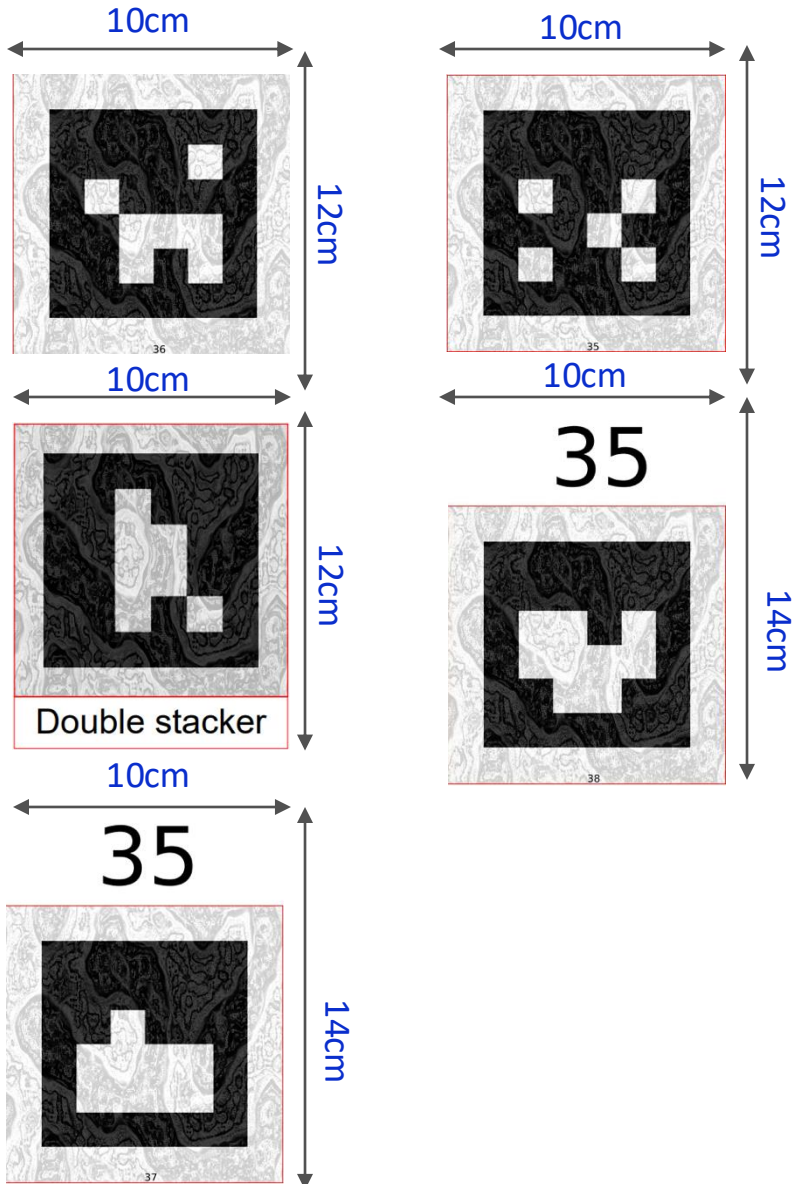


Counter balance

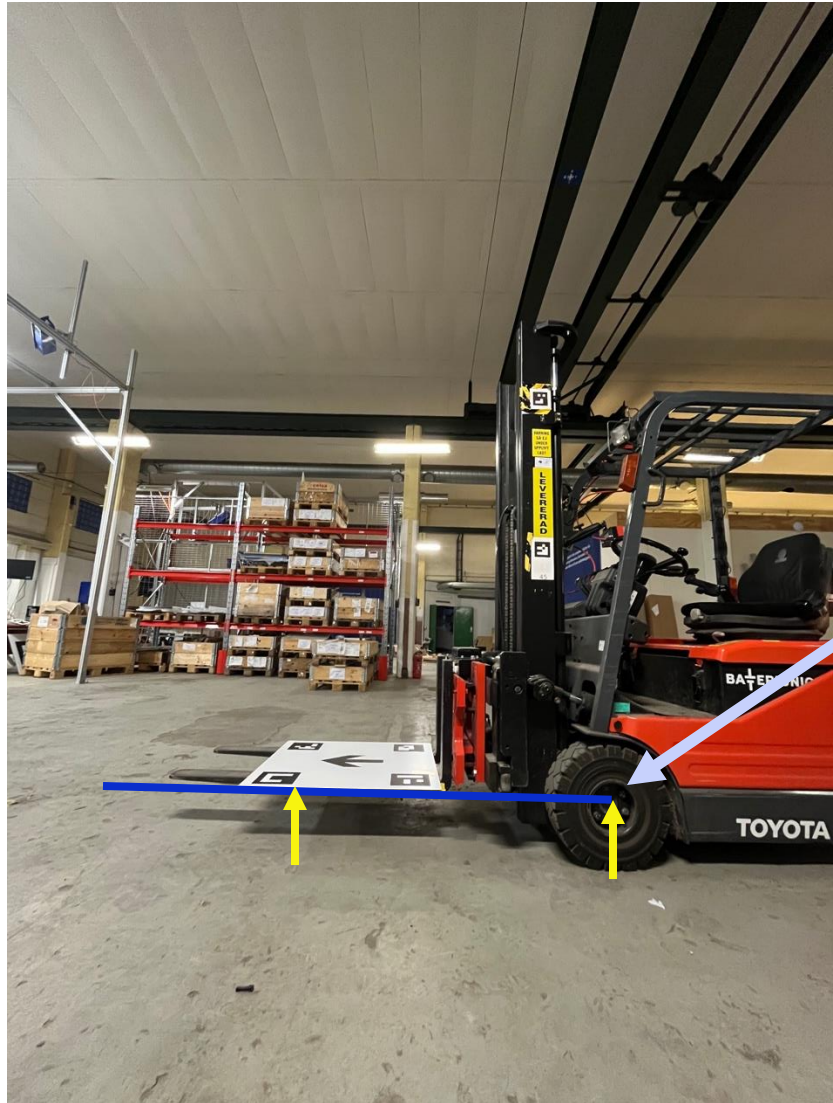


Double stacker

CIND Aruco Code – Pallet mover identificaion

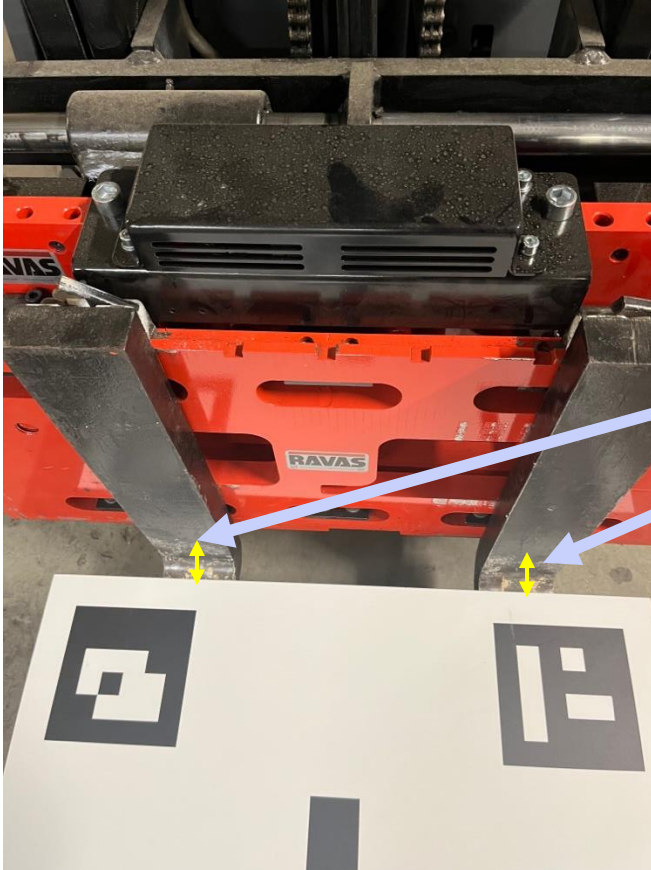


Position of "registration board" (side view)



The height level of "registration board" on forks should be equal with centerpoint of forklift wheels.

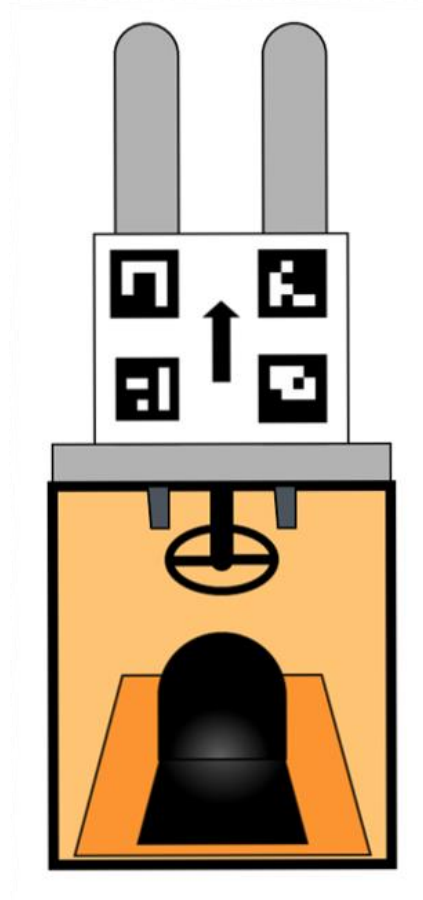
Position of "registration board" (front/topview)



The "registration board" should not be placed on the "curved surface"

The registration board need to be flat, therefore place it approx. 1cm away from "curved surface".

Position of "registration board" (front/topview)



The "registration board" should not be placed on the "curved surface"

The registration board need to be flat, therefore place it approx. 1cm away from "curved surface".

Successful pallet mover registration



A successful pallet mover registration indicates with a “green check and pallet registration board” symbol.